

Engineering Services

MISSION

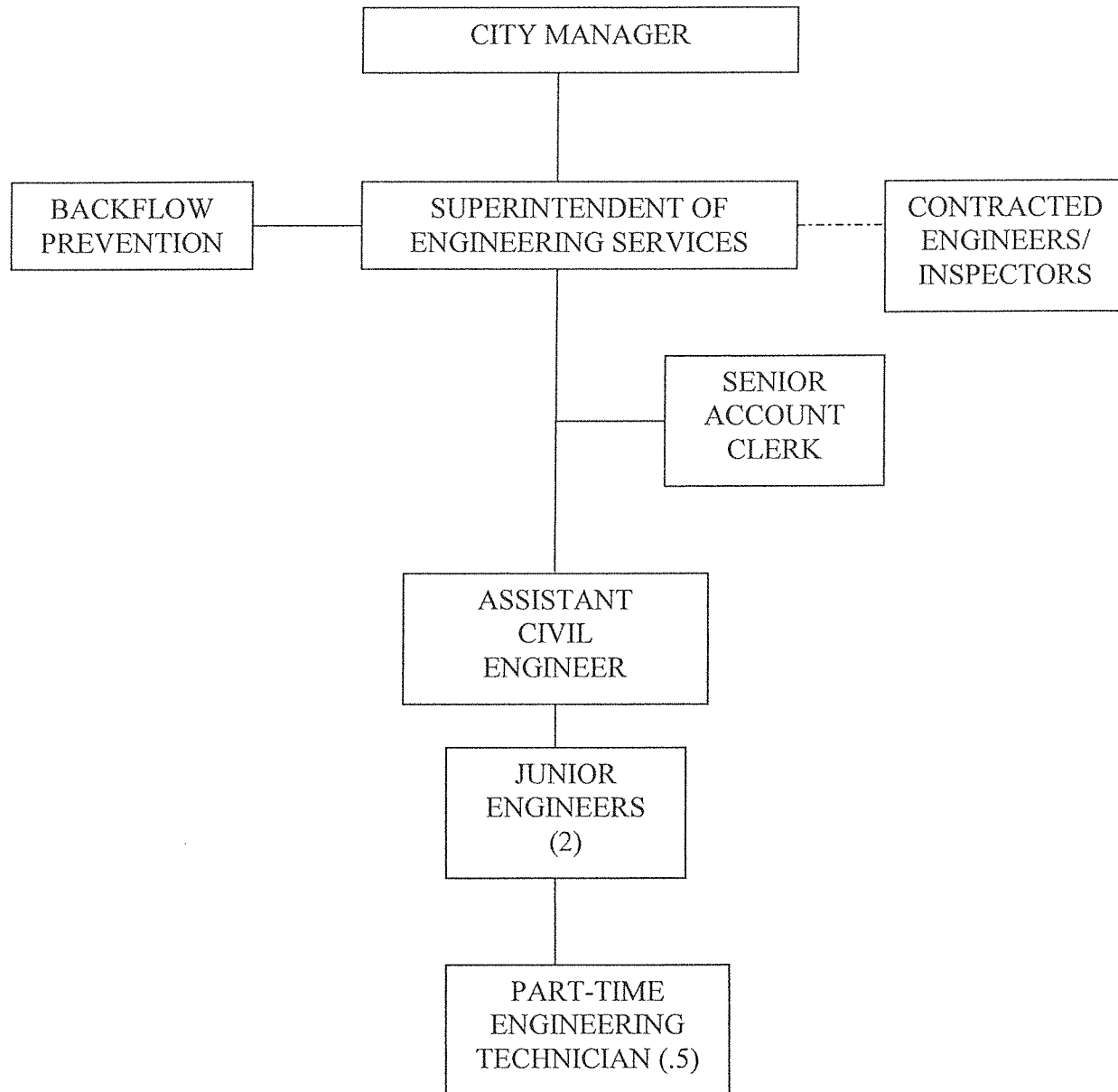
It is the mission of this department to operate and maintain a variety of functions in an efficient and cost-effective manner. These functions include contract administration of Public Works projects; the layout, engineering, and management of the city's public streets and right-of-ways including all utilities and appurtenances contained within; and overall support to other city departments and agencies by providing engineering services as needed.

ORGANIZATIONAL STRUCTURE AND DUTIES

The NYS Education Law requires that the construction of Public Works projects and the providing of engineering services to be under the supervision of a registered licensed professional engineer. These requirements are met by the Superintendent of Engineering Services, who is a licensed professional engineer.

The Engineering Department is responsible for the administration and management of all major capital Public Works projects, including the projects included in the NYSDOT's Five-Year Capital Improvement Program (such as John Walsh Blvd, the East and West Genesee Street Reconstruction projects, etc.), all City projects such as the Downtown Improvement Project, the Fire Dept. PESH Improvements, etc., the City's annual Road Improvement Program, the Community Development Block Grant Program's sidewalk and curb projects, the City's sidewalk, curb and handicap ramps program, the City's Revolving Loan sidewalk and sewer-water programs, the administration of the Federal EPA-mandated Industrial Pretreatment Program, and the bidding process for all City projects and major equipment and chemical purchases.

The Superintendent of Engineering Services also assists the City's Public Works Department's Water Division in the management of the Backflow Prevention Program. The City Engineer is also in charge of all public rights-of-way including the coordination of all public utility companies' infrastructure contained within the City's rights-of-way.



City of Auburn, New York, FY 2011-12 Adopted Budget

FULL TIME EMPLOYEE DISTRIBUTION

	GRADE	STEP	2010-11	2011-12	ANNUAL SALARY
<u>ENGINEERING SERVICES</u>					
Supt. of Engineering	M28	E	1.0	1.0	\$94,436
Asst Civil Engineer	24	H	1.0	1.0	74,401
Jr. Engineer	22		2.0	2.0	60,859avg.(121,717)
Senior Account Clerk	13	H	1.0	1.0	48,757
Engineering Technician, PT			0.5	0.5	18,000
GIS/CAD Technician, PT			0.5	0.5	6,900
Department Totals			6.0	6.0	

CITY OF AUBURN

		2009-2010 Actual <u>Expenditure</u>	2010-2011 Adopted <u>Budget</u>	2010-2011 Amended <u>Budget</u>	2011-2012 Recommended <u>City Manager</u>	2011-2012 Adopted <u>City Council</u>
A1440	ENGINEERING					
110	SALARY & WAGES	277,167.26	325,897.00	325,740.00	339,311.00	339,311.00
120	LONGEVITY & INCENTIVE	575.00	800.00	800.00	800.00	800.00
130	TEMPORARY & PART TIME	24,508.39	18,000.00	18,000.00	24,900.00	24,900.00
140	HOLIDAY PAY	726.97	795.00	952.00	800.00	800.00
150	OVERTIME	3,542.20	7,000.00	7,000.00	7,000.00	7,000.00
210	FURNITURE & FIXTURES	0.00	0.00	0.00	950.00	950.00
220	OFFICE EQUIPMENT	8,937.96	9,425.00	9,425.00	9,425.00	9,425.00
250	OTHER EQUIPMENT	22,923.91	26,200.00	26,200.00	26,200.00	26,200.00
411	OFFICE SUPPLIES	3,438.64	3,000.00	3,000.00	3,500.00	3,500.00
412	OPERATING SUPPLIES	7,833.37	6,000.00	6,280.63	7,531.00	7,531.00
440	SERVICES	4,310.17	10,500.00	10,500.00	10,500.00	10,500.00
450	FEES	0.00	500.00	500.00	500.00	500.00
460	TRAVEL, TRAINING, PROF DEV	2,011.86	1,500.00	1,500.00	2,500.00	2,500.00
481	FUEL	1,139.92	2,000.00	2,000.00	2,000.00	2,000.00
482	VEHICLE MAINT/REPAIRS	4,245.51	2,500.00	2,500.00	4,400.00	4,400.00
801	RETIREMENT-GENERAL	25,193.00	37,014.00	37,014.00	37,014.00	37,014.00
811	SOCIAL SECURITY & MEDICARE	23,156.85	26,966.00	26,966.00	38,460.00	38,460.00
821	WORKERS' COMP-PREMIUM	3,779.40	4,957.00	4,962.40	6,444.00	6,444.00
841	HEALTH INSURANCE	46,017.86	58,675.00	58,675.00	58,675.00	58,675.00
842	DENTAL INSURANCE	3,202.80	4,585.00	4,585.00	4,585.00	4,585.00

CITY OF AUBURN

	2009-2010 Actual Expenditure	2010-2011 Adopted Budget	2010-2011 Amended Budget	2011-2012 Recommended City Manager	2011-2012 Adopted City Council
845 VISION COVERAGE-CSEA	569.76	888.00	888.00	1,000.00	1,000.00
ACTIVITY TOTAL	463,280.83	547,202.00	547,488.03	586,495.00	586,495.00
A8245 MUNICIPAL POWER AGENCY					
130 TEMPORARY & PART TIME	3,007.50	3,500.00	3,500.00	3,500.00	3,500.00
811 SOCIAL SECURITY & MEDICARE	230.09	268.00	268.00	268.00	268.00
ACTIVITY TOTAL	3,237.59	3,768.00	3,768.00	3,768.00	3,768.00
DEPARTMENT TOTAL	466,518.42	550,970.00	551,256.03	590,263.00	590,263.00