

This Addendum contains changes to the requirements of the Bidding Documents that have been issued to date. Such changes are to be incorporated into the Bid/Construction project and shall apply to the Work with the same meaning and force as if they had been included in the original documents. Wherever this Addendum modifies a portion of a paragraph of the Project Manual or a portion of any Drawing, the remainder of the paragraph or Drawing shall remain in force. This Addendum is hereby included in and made a part of the Bidding Documents whether or not attached hereto.

## Addendum No. 1

March 22, 2024

### Part 1 - Non Contract Documents / Bidding / Proposal

- a. 001000 – ADVERTISEMENT FOR BID – MODIFY the Pre-Bid conference date to Thursday, March 28th, 2024 at 1:00 pm.

### Part 2 –Specifications

- a. NONE

### Part 3 - Drawings:

1. Drawing G001,
  - a. MODIFY the drawing title HM100 to read "HAZARDOUS MATERIAL ABATEMENT - FIRST FLOOR PLAN"
  - b. MODIFY the drawing title HM101 to read "HAZARDOUS MATERIAL ABATEMENT - SECOND FLOOR ROOF PLAN"
  - c. DELETE the drawing tile HM102 from the drawing list.
2. Drawing M500,
  - a. At Detail C8, REPLACE the entire detail with "WALL MOUNTED EXHAUST FAN" detail drawing, refer to attached revised drawing.

### Part 4 – Clarifications:

1. Question – Do you have an estimate for the GC contract?

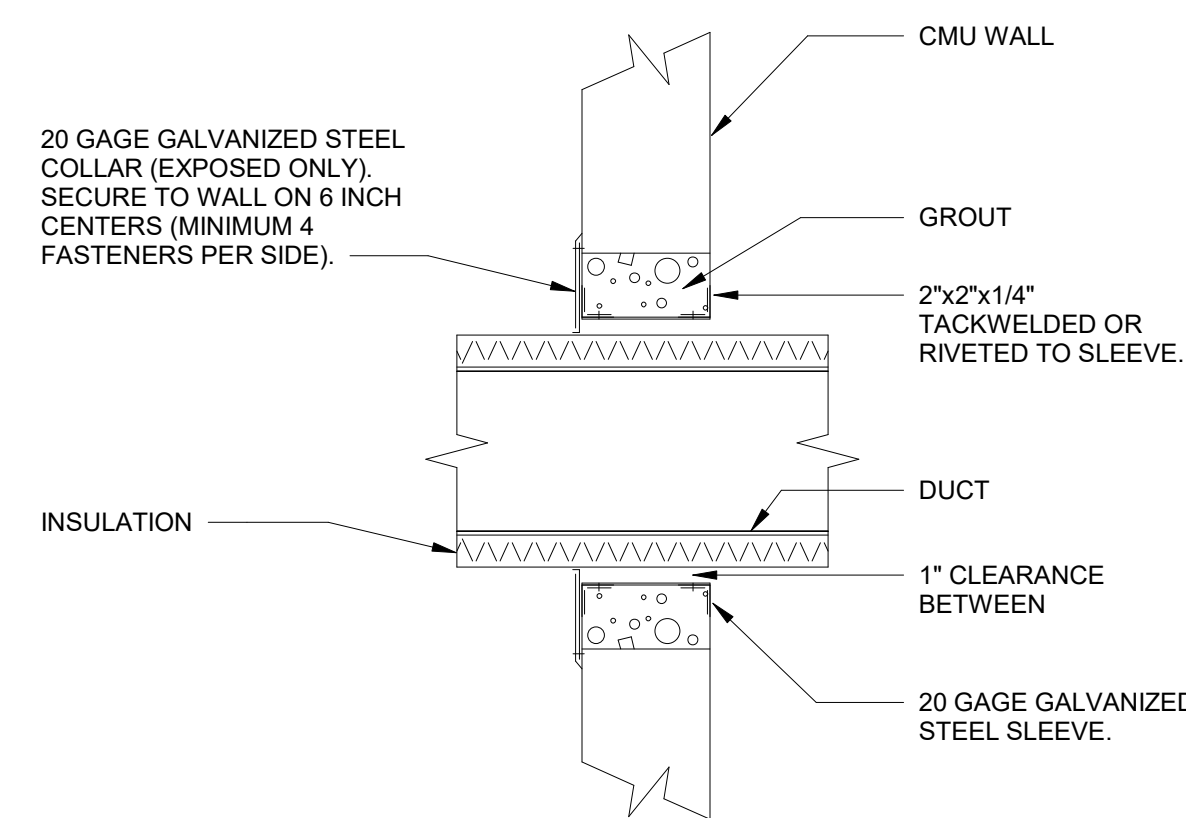
Response – Refer to Section 011000 SUMMARY, article 1.16, maximum total construction budget is \$3m, no further breakdown is available

2. Question – How do I request digital and print drawings?

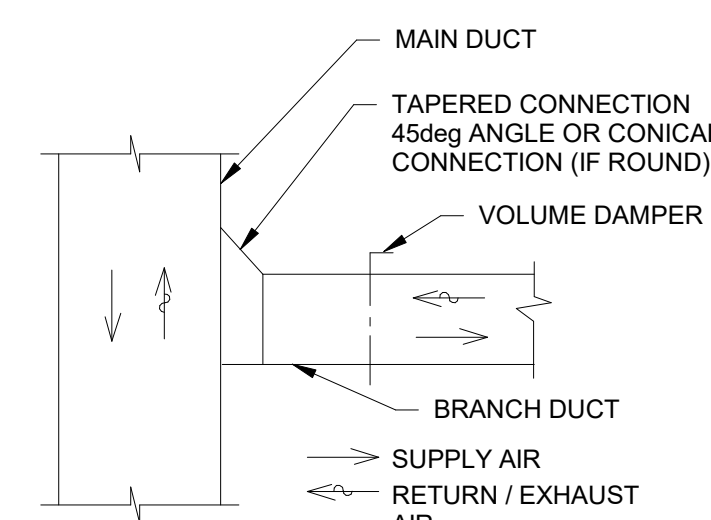
Response – As per Section 001000 – ADVERTISEMENT FOR BID, "Bidding Documents may be downloaded from the City of Auburn website. Prospective Bidders must register with the website as a plan holder." Print copies are not available to bidders.

END OF ADDENDUM No. 1

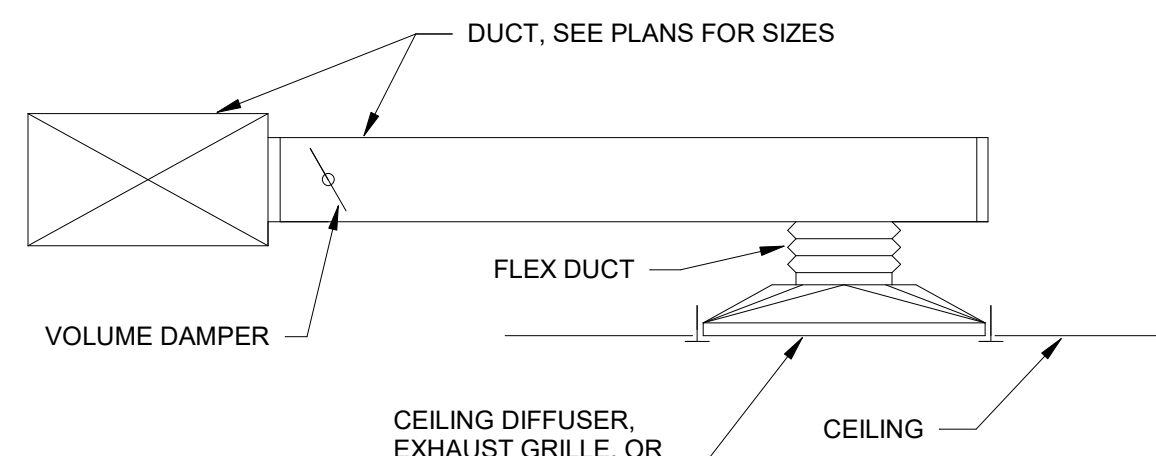
Andrew Petruzzelli, AIA  
Project Architect



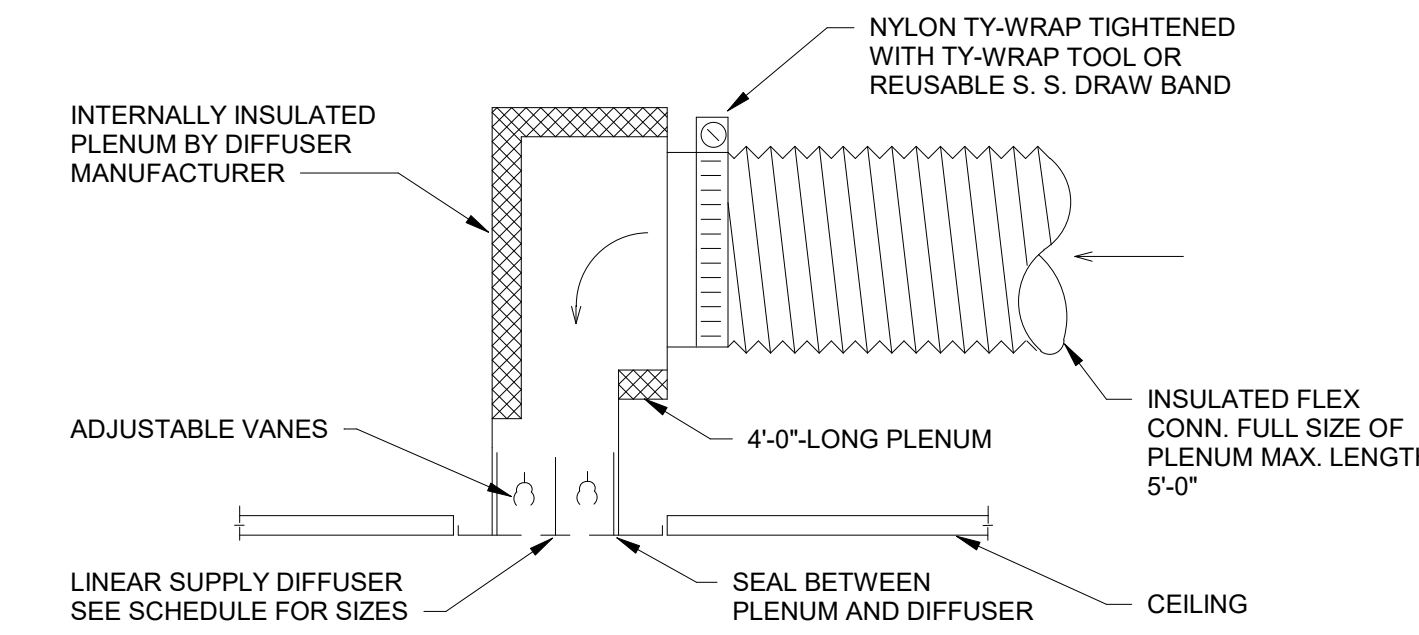
**J1 DUCT PENETRATION THRU WALL**  
SCALE: NONE



**J3 DUCT TAKE-OFFS**  
SCALE: NONE

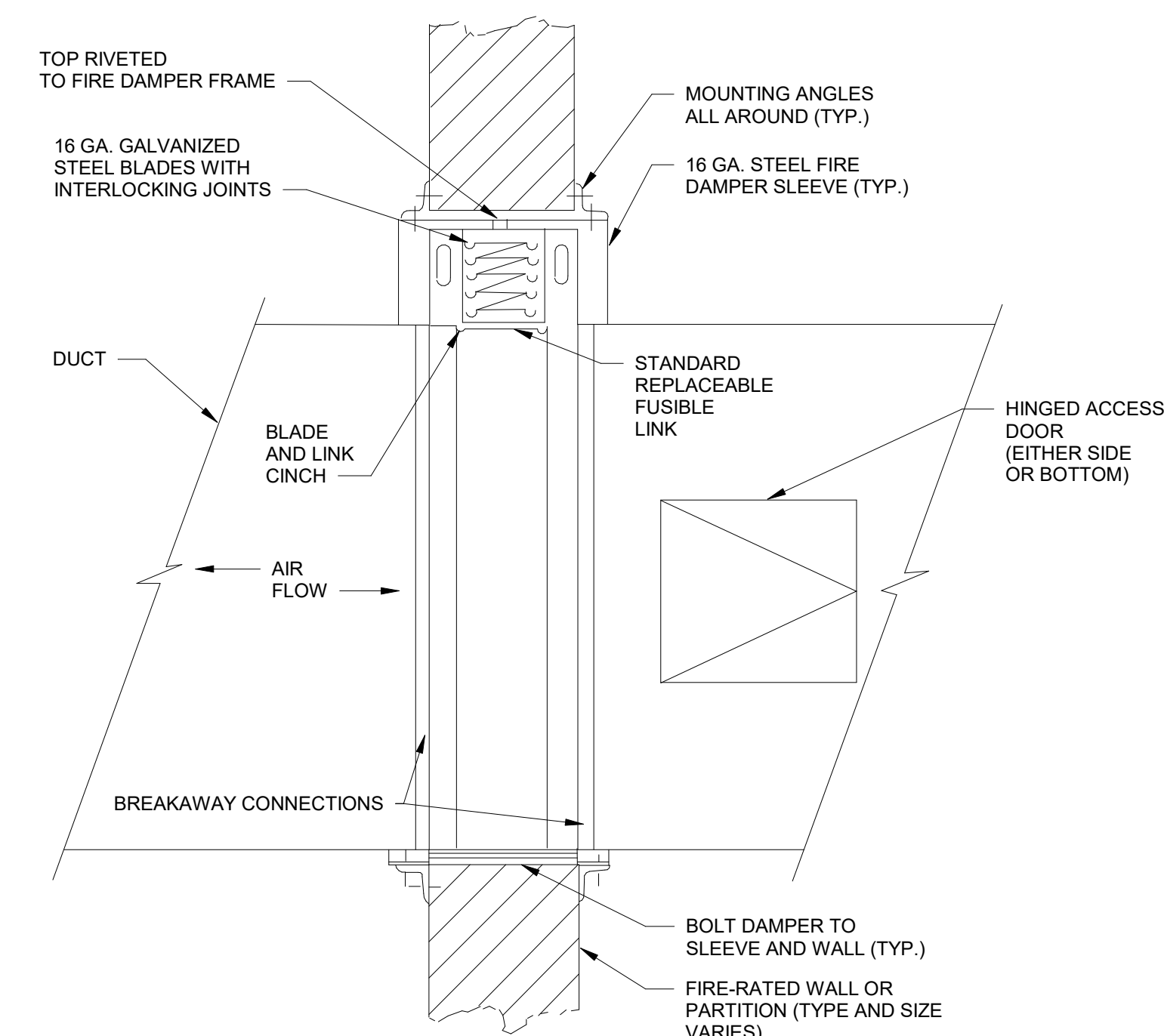


**J5 CEILING DIFFUSER, EXHAUST GRILLE, OR RETURN GRILLE CONNECTION DETAIL**  
SCALE: NONE



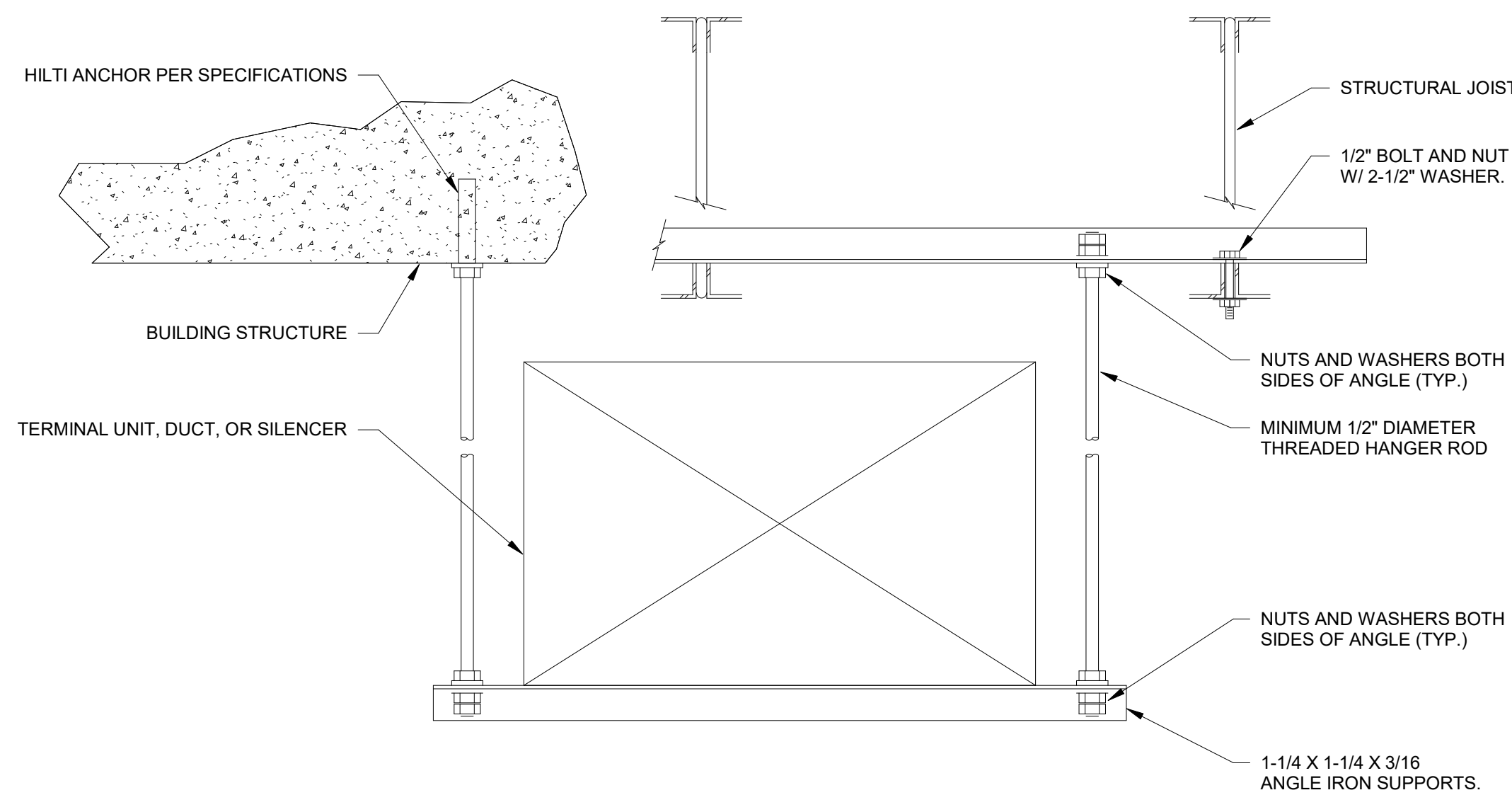
- NOTES:**
1. OFFSETS WITH FLEX DUCT SHALL NOT EXCEED 30\"/>

**H6 LINEAR DIFFUSER CONNECTION DETAIL**  
SCALE: NONE

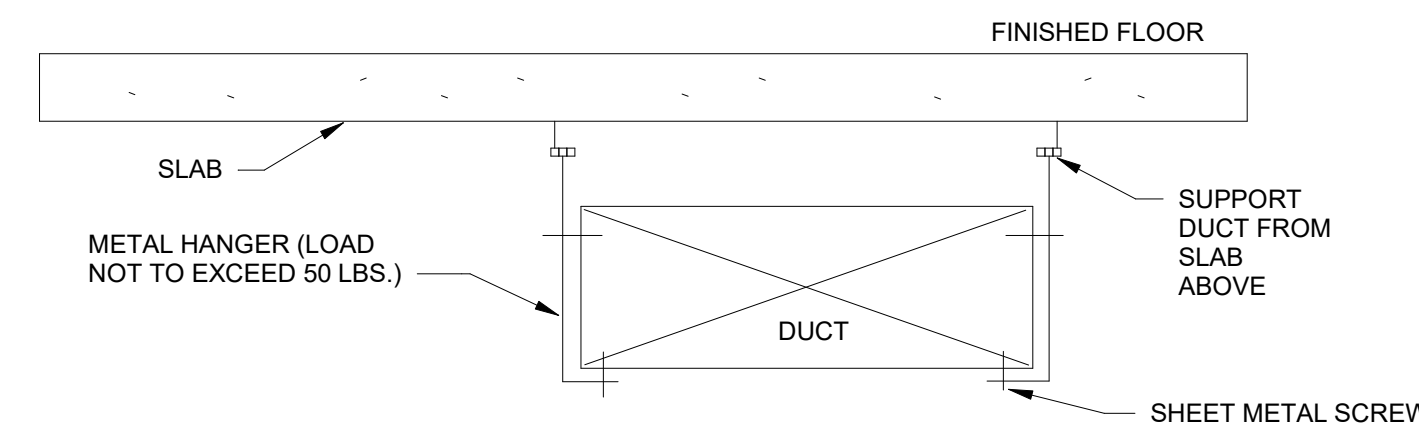


- NOTES:**
1. ANY CLEARANCE BETWEEN FIRE-RATED WALL OR PARTITION AND DAMPER SLEEVE OR DAMPER SHALL BE FILLED WITH FIRE-RESISTANT PACKING ON ALL SIDES TO MAINTAIN FIRE RATING.
  2. DAMPER BLADES SHALL BE OUT OF AIRSTREAM (TYPE 'C') WHEN OPEN (100% FREE AREA) UNLESS DUCT DIMENSIONS DICTATE MULTIPLE DAMPER SECTIONS IN WHICH CASE TYPE 'B' MAY BE USED.
  3. FOR HORIZONTAL APPLICATION PROVIDE SPRING LOADED CLOSURE.
  4. WHEN DUCTWORK IS INSULATED OR LINED, PROVIDE INSULATED ACCESS DOOR.
  5. ACCESS DOOR SHALL BE 12\"/>

**G11 FIRE DAMPER DETAIL**  
SCALE: NONE

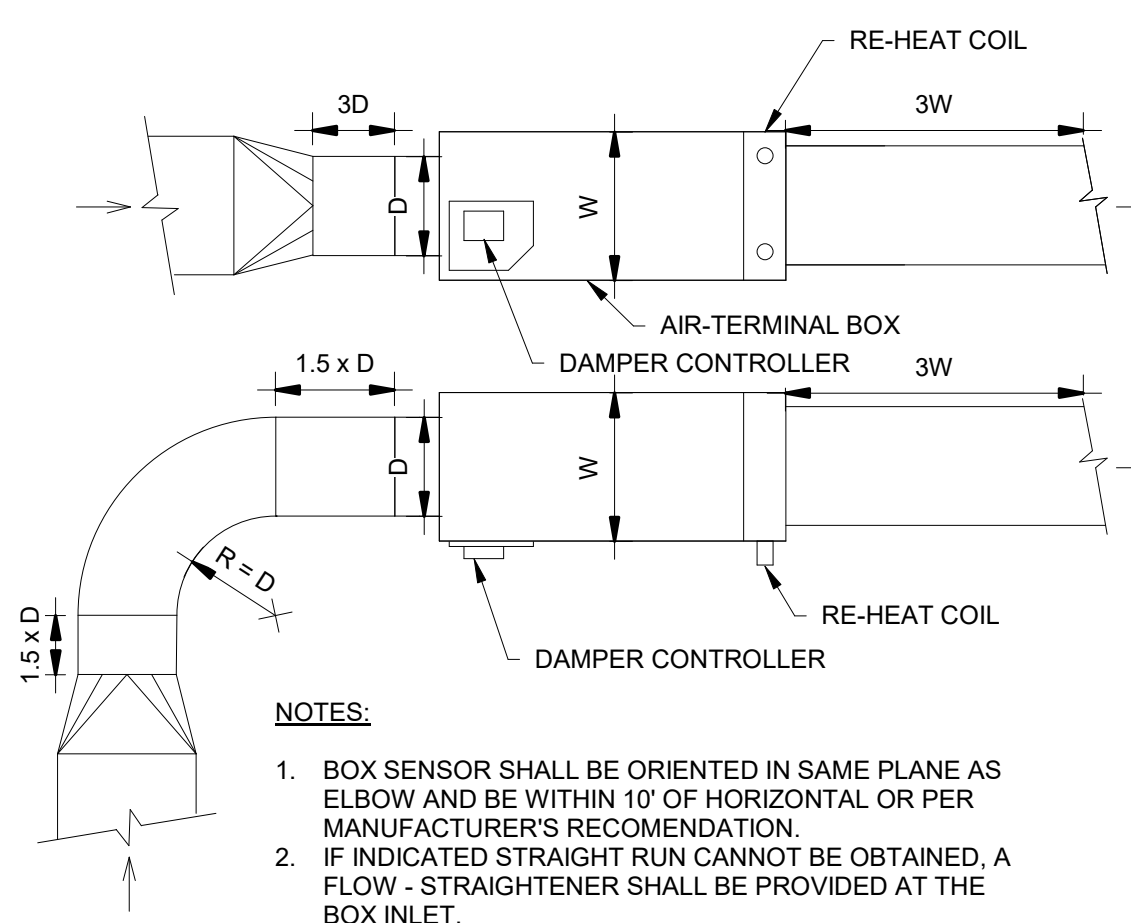


**F1 DUCT AND TERMINAL UNIT HANGER DETAIL**  
SCALE: NONE



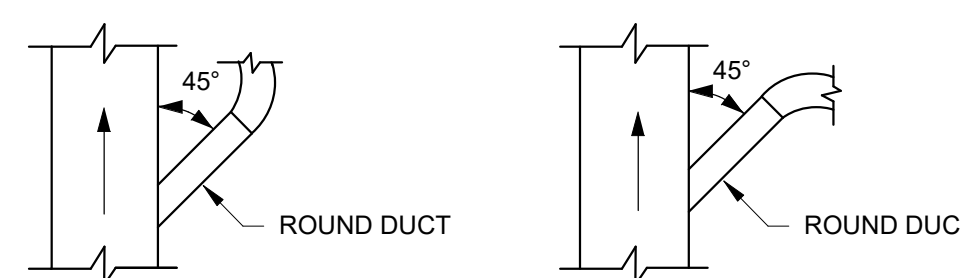
- NOTES:**
1. DUCTS SHALL NOT BE HUNG FROM OR SUPPORTED BY HUNG CEILING.
  2. FOR DUCTS NOT EXCEEDING 2 SQ. FT. IN CROSS-SECTIONAL AREA, HANGERS SHALL BE OF METAL NOT LESS THAN 16 GA.
  3. FOR DUCTS LARGER THAN 2 SQ. FT. IN CROSS-SECTIONAL AREA, HANGERS SHALL BE OF METAL NOT LESS THAN 12 GA.
  4. HANGERS FOR ALL DUCTS SHALL BE TURNED UNDER AND FASTENED TO THE BOTTOM OF DUCT AS SHOWN ABOVE.
  5. WHERE CROSS-SECTIONAL AREA OF DUCT EXCEEDS 8 SQ. FT., HANGERS SHALL BE SPACED NOT MORE THAN 4 FT. ON CENTERS.
  6. ON DUCTS OVER 48\"/>

**F5 DUCT SUPPORT FROM SLAB**  
SCALE: NONE

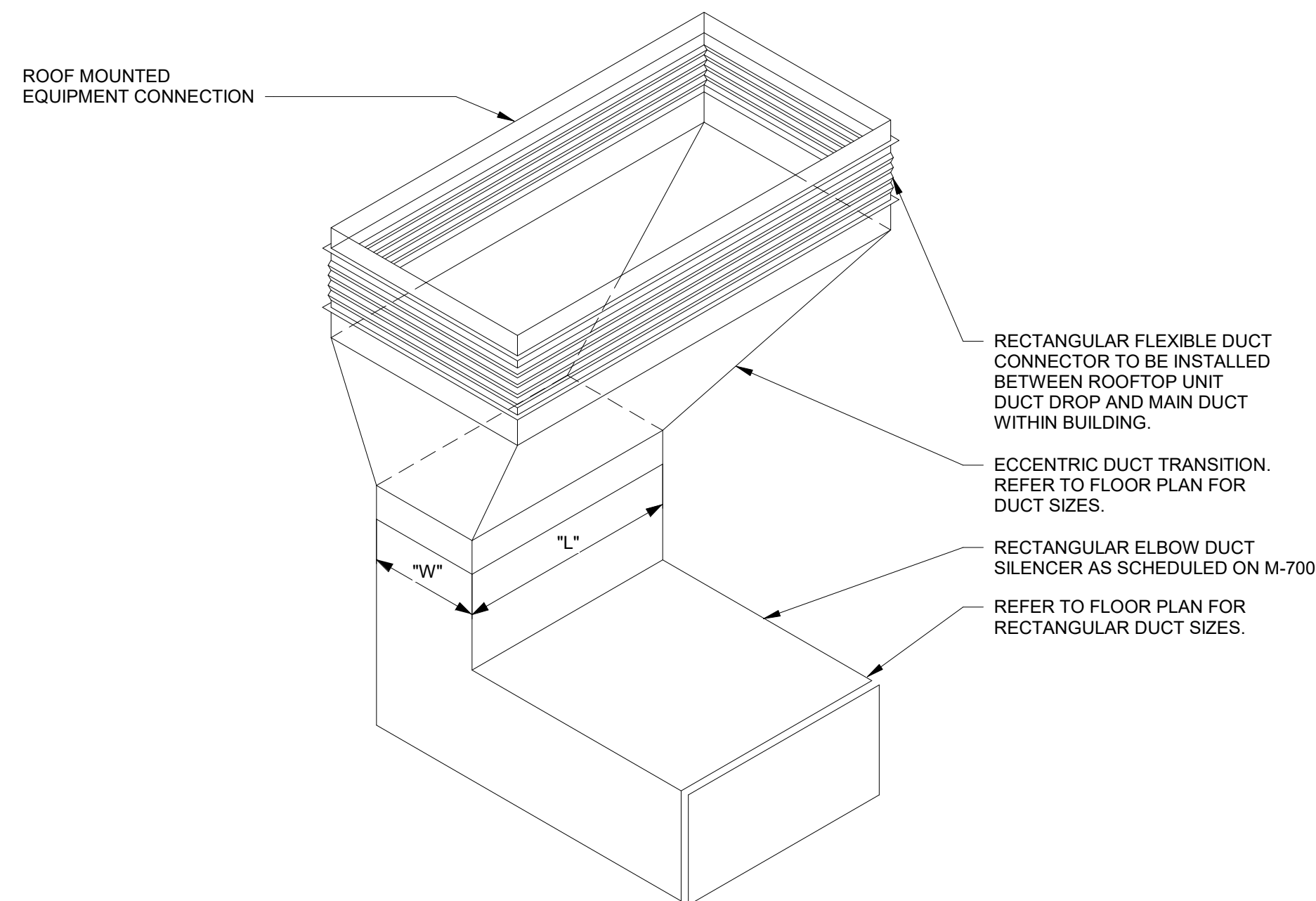


- NOTES:**
1. BOX SENSOR SHALL BE ORIENTED IN SAME PLANE AS ELBOW AND BE WITHIN 10\"/>

**F8 AIR TERMINAL BOX CONNECTIONS**  
SCALE: NONE

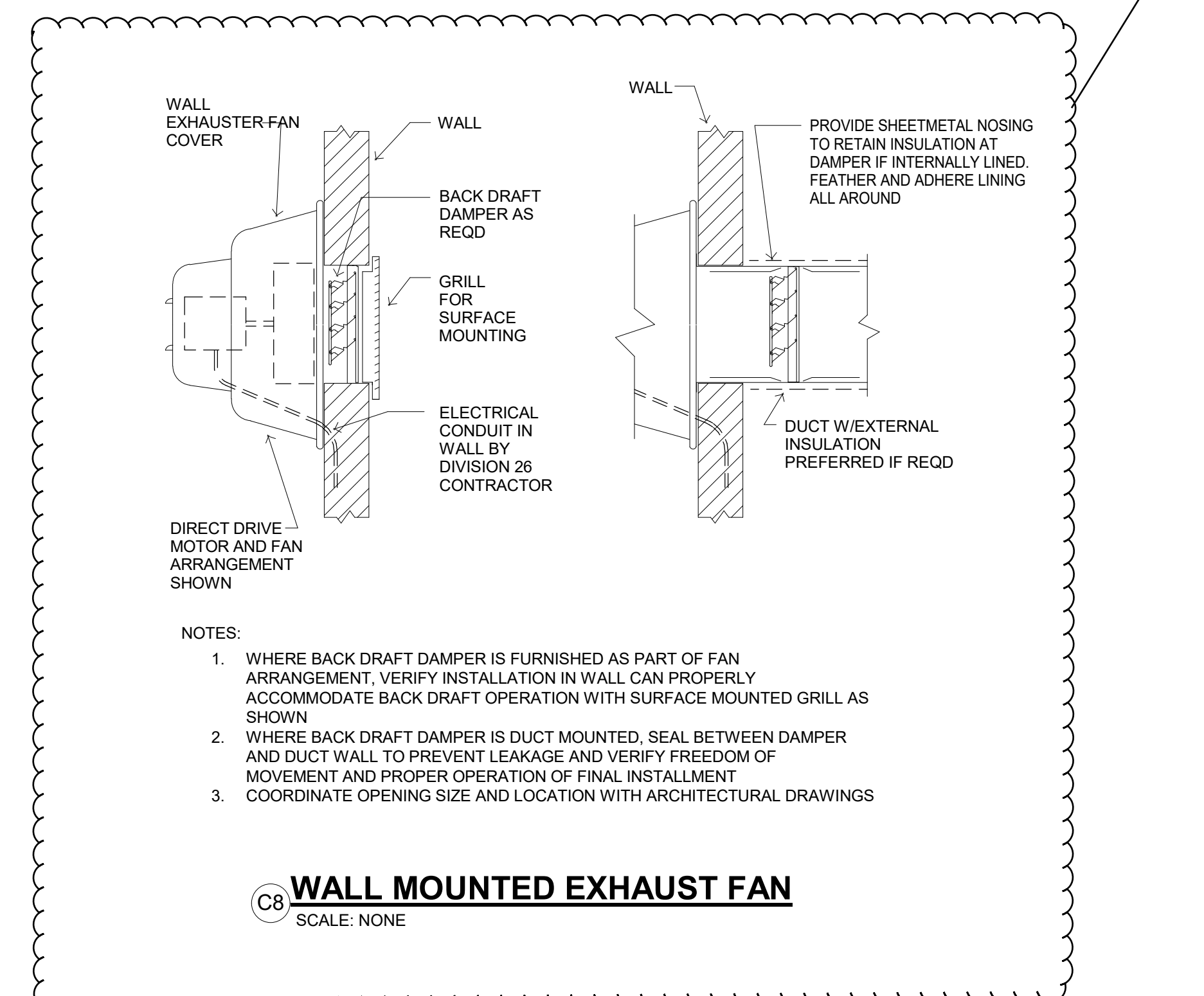


**D1 MEDIUM PRESSURE TAKE OFFS TO VAV BOX**  
SCALE: NONE



**NOTE:**  
T. RECTANGULAR TRANSITION IN DUCT ARE SHOWN FOR EXAMPLE ONLY. CONTRACTOR TO REFER TO M101 PLANS FOR FINAL DUCT SHAPES, SIZES AND ELEVATIONS.

**C3 ECCENTRIC TRANSITION TO ROOF MOUNTED EQUIPMENT**  
SCALE: NONE



- NOTES:**
1. WHERE BACK DRAFT DAMPER IS FURNISHED AS PART OF FAN ARRANGEMENT, VERIFY INSTALLATION IN WALL CAN PROPERLY ACCOMMODATE BACK DRAFT OPERATION WITH SURFACE MOUNTED GRILL AS SHOWN
  2. WHERE BACK DRAFT DAMPER IS DUCT MOUNTED, SEAL BETWEEN DAMPER AND DUCT WALL TO PREVENT LEAKAGE AND VERIFY FREEDOM OF MOVEMENT AND PROPER OPERATION OF FINAL INSTALLMENT
  3. COORDINATE OPENING SIZE AND LOCATION WITH ARCHITECTURAL DRAWINGS

**C8 WALL MOUNTED EXHAUST FAN**  
SCALE: NONE