


**Legend**

- Water\_System\_Valves
- ⊙ Manhole
- Catch Basin
- ⬮ Hydrants
- Sewer Main

**Procedure**

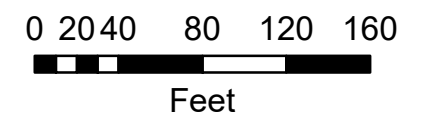
- Mill 1.5", 1.5" 9.5mm Top
- Mill 3.5", 2" 19mm Binder, 1.5" 12.5 mm Top
- Curb Reset/Replacement Area
- Sidewalk Replacement
- New 6" SDR Storm Lateral
- 12" CMP to be Replaced



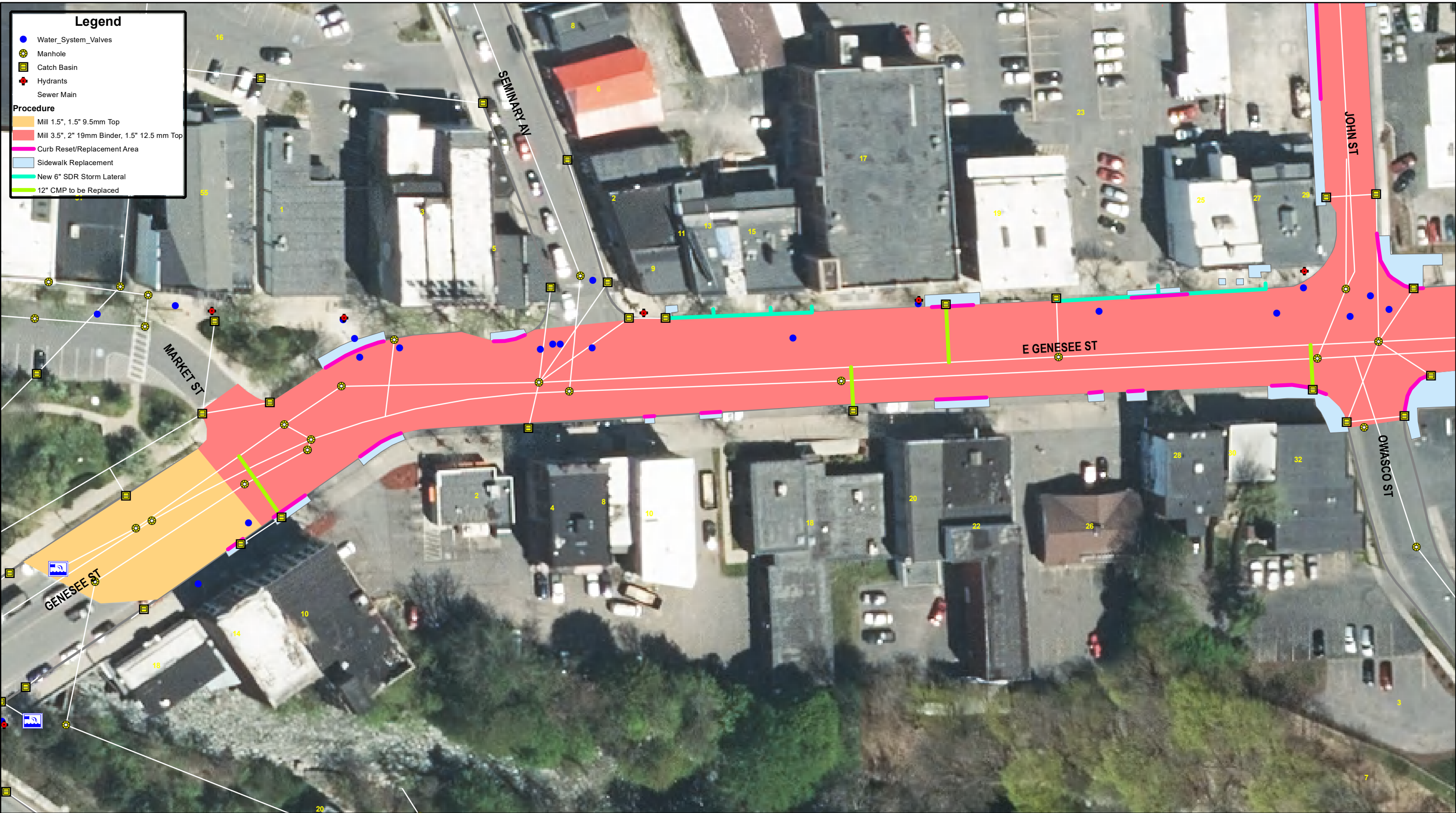
City of Auburn  
 Department of Engineering Services  
 Memorial City Hall  
 24 South St  
 Auburn, NY 13021  
 Date: 6/9/2022  
 Drawn By: SSM

# East Genesee St/John St Paving Project

## Overall Work Area



1




**Legend**

- Water\_System\_Valves
- ⊗ Manhole
- ⊠ Catch Basin
- ⊕ Hydrants
- Sewer Main

**Procedure**

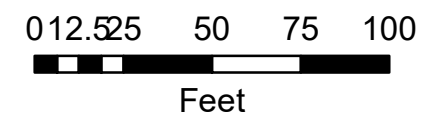
- Mill 1.5", 1.5" 9.5mm Top
- Mill 3.5", 2" 19mm Binder, 1.5" 12.5 mm Top
- Curb Reset/Replacement Area
- Sidewalk Replacement
- New 6" SDR Storm Lateral
- 12" CMP to be Replaced



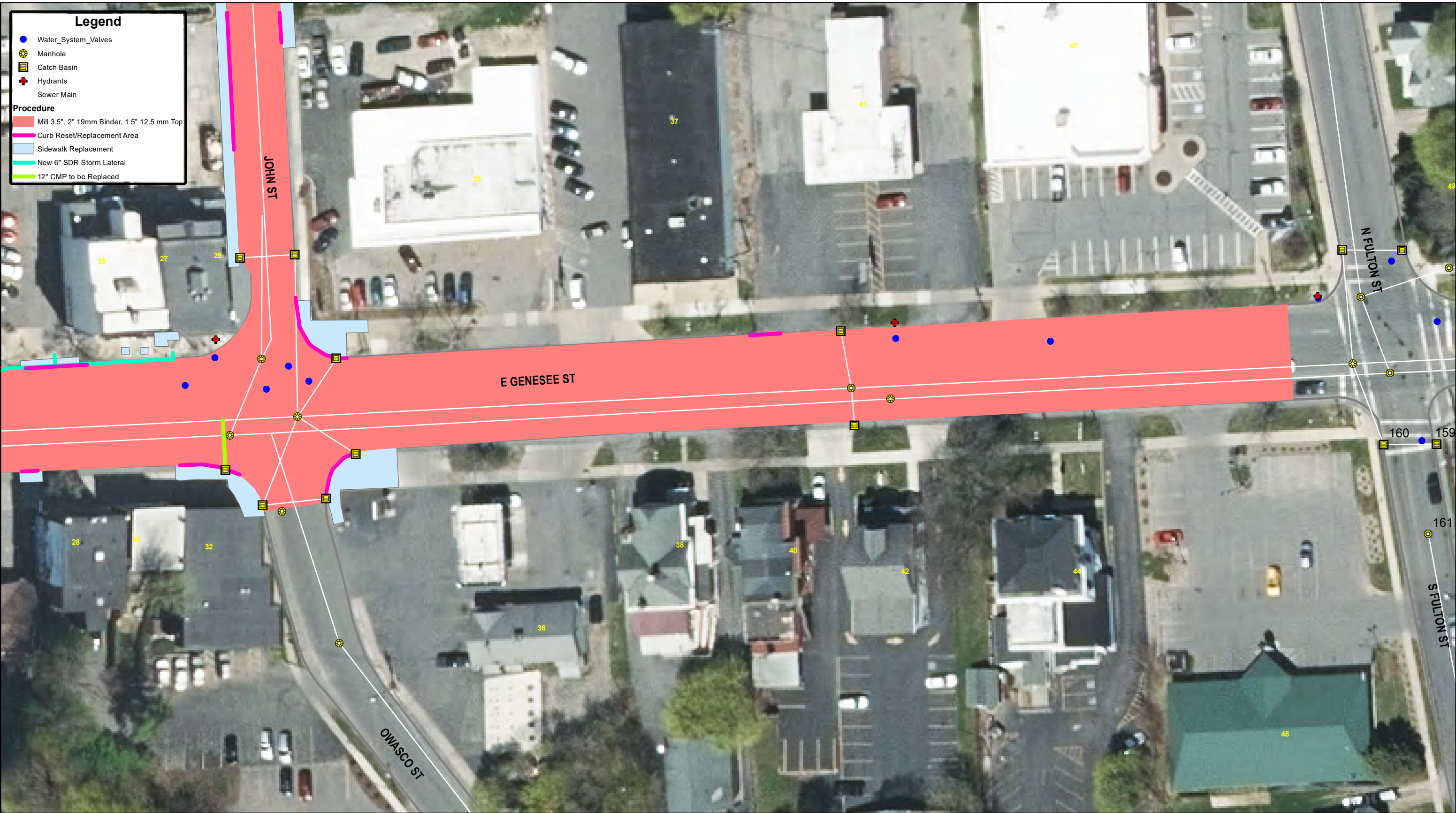
City of Auburn  
 Department of Engineering Services  
 Memorial City Hall  
 24 South St  
 Auburn, NY 13021  
 Date: 6/9/2022  
 Drawn By: SSM

# East Genesee St/John St Paving Project

## East Genesee Street



# 2



**Legend**

- Water\_System\_Valves
- ⊗ Manhole
- Catch Basin
- ⊕ Hydrants
- Sewer Main

**Procedure**

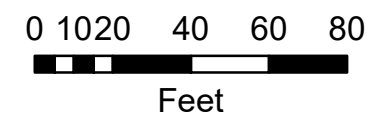
- Mill 3.5", 2" 19mm Binder, 1.5" 12.5 mm Top
- Curb Reset/Replacement Area
- Sidewalk Replacement
- New 6" SDR Storm Lateral
- 12" CMP to be Replaced



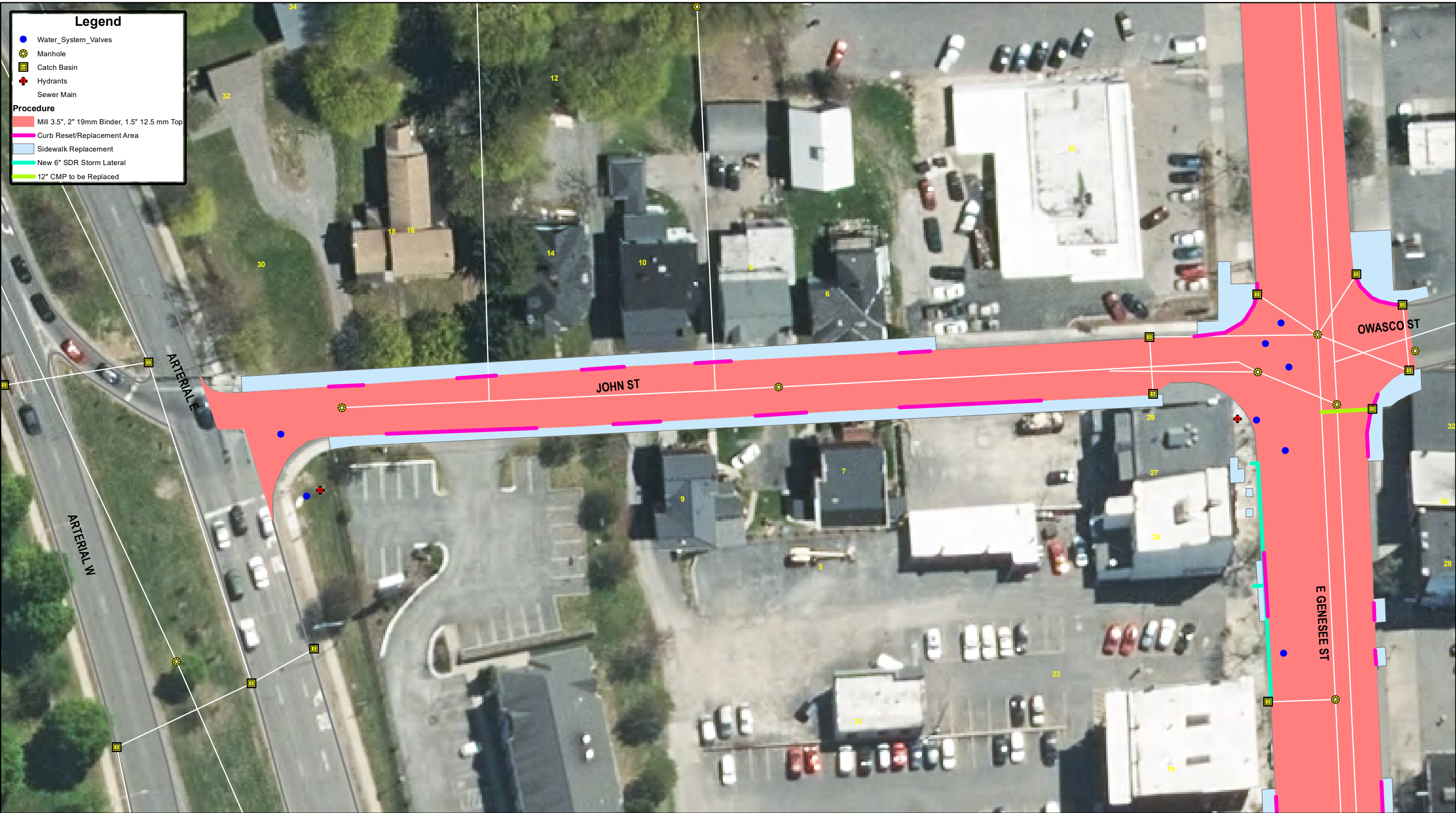
City of Auburn  
 Department of Engineering Services  
 Memorial City Hall  
 24 South St  
 Auburn, NY 13021  
 Date: 6/9/2022  
 Drawn By: SSM

# East Genesee St/John St Paving Project

## East Genesee Street



3




**Legend**

- Water\_System\_Valves
- ⊗ Manhole
- Catch Basin
- ⬮ Hydrants
- Sewer Main

**Procedure**

- Mill 3.5", 2" 19mm Binder, 1.5" 12.5 mm Top
- Curb Reset/Replacement Area
- Sidewalk Replacement
- New 6" SDR Storm Lateral
- 12" CMP to be Replaced



City of Auburn  
 Department of Engineering Services  
 Memorial City Hall  
 24 South St  
 Auburn, NY 13021  
 Date: 6/9/2022

Drawn By: SSM

# East Genesee St/John St Paving Project

## John Street

0 10 20 40 60 80  
 Feet

